

**FEATURES:**

- Very Low Current draw
- Dual Voltage inputs
- Terminal Block connections
- High Holding force
- Chrome powder coat finish
- Mounting Hardware included
- Easily mounted

Options:

- Double Brass plating
- Extension rods
- Misalignment rods
- Surface mount Backbox
- Time saving drill fixture

**DESCRIPTION:**

Evax DH Series of electromagnetic fire door holders are constructed of durable die-cast metal finished in high-luster chrome or dark bronze powder coat finish or brass plating.

Other features include standard dual-voltage AC and DC inputs of 24 and 120 volts (standard), as well as 12 and 24 volts and at 24 and 220 volts models. While reducing stocking requirements, the 24 and 120 volts model draws only 0.020 mA at 24 VDC, lowering overall job costs. Other features include single or double-coil floor mounting, surface mounting and direct wall mounting. No brackets are required.

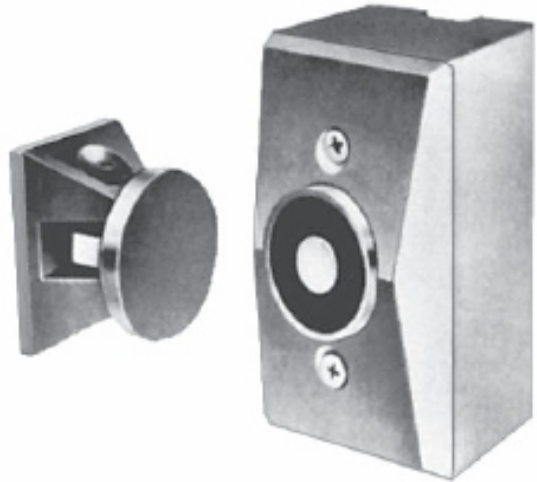
The DH Series door holders offer installation using an adhesive template assuring alignment without secondary adjustments. Accessories include extension and misalignment rods (various lengths) for correct alignment between door and wall at distances greater than 12.0" (30.48 cm) and misalignment over 4.0" (10.16 cm).

The aircraft-quality DH drill fixture reduces installation time and provides a near-perfect alignment of catch-plate and armature. Basic units offer superior holding force and low residual magnetism.

Models working at 12 and 24 volts and at 24 and 120 volts can operate at higher listed voltages, producing holding forces in excess of 100 pounds (45.3 kg) for special applications.

Evax electromagnetic DH Series door holders are designed to hold self-closing swinging doors open until energized by a remote sensing device responding to smoke, heat, or flames, alarm systems, or a switch. When de-energized, the door holder releases the door, enabling it to swing closed to check the spread of smoke, heat, or flames. The door holder can also be used in other remote door-closing applications as well. The units are recommended for automatic area protection against smoke, heat, or flames in schools, hospitals, nursing homes, offices, and other public buildings of all kinds. Evax DH Series of electromagnetic door holders are specially engineered for easy connection to detectors, sensors, alarm systems, and annunciators.

**EF-RSG-DH**  
**Electromagnetic**  
**Fire Door Holders**



**ELECTRICAL / MECHANICAL SPECIFICATIONS:**

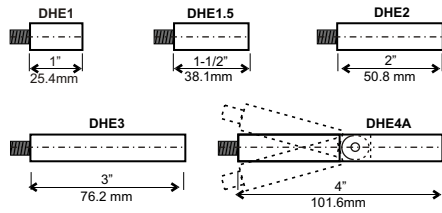
VOLTAGE	DC/mA	AC/mA	Lb.	KG.
12v	0.040	0.038	30	13.6
24v	0.040	0.038	30	13.6
24v	0.020	0.019	40	18.1
12v	----	0.020	35	15.8
24v	0.020	0.019	40	18.1
220v	----	0.015	25	11.3
24v	0.085	0.081	75*	34.0*
120v	----	0.100	110*	49.8*

\*To obtain performance values above, apply High voltage to low voltage terminals (C & L)  
 This configuration applies to 12 & 24v and 24 & 120v models. See installation sheets for more details

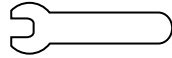
**NOTE:**

Refer to Installation manual for specific installation and product information, catalog sheet for reference only.

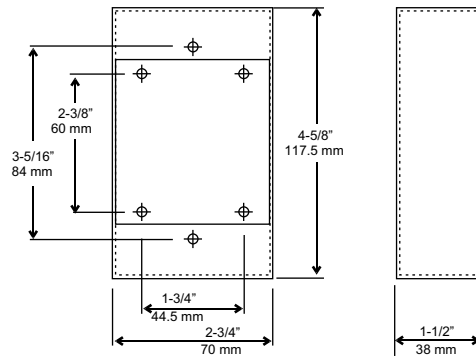
## Extensions: Extension rods



## Extension Wrenches



## Surface Mounting: DHBB (back box)



### HOW TO ORDER:

#### Door Holders:

<b>EF-RSG-DH24120FPC</b>	Door holder, semi-flush, chrome powder coat.
<b>EF-RSG-DH24120FB</b>	Door holder, semi-flush, brass plated.
<b>EF-RSG-DH24120FDBR</b>	Door holder, semi-flush, dark bronze powder coat.
<b>EF-RSG-DH24120SPC</b>	Door holder, surface mount, chrome powder coat.
<b>EF-RSG-DH24120SB</b>	Door holder, surface mount, brass plated.
<b>EF-RSG-DH24120SDBR</b>	Door holder, surface mount, dark bronze powder coat.
<b>EF-RSG-DH24120RPC</b>	Door holder, recessed, chrome powder coat.
<b>EF-RSG-DH24120RB</b>	Door holder, recessed, brass plated.
<b>EF-RSG-DH24120RDBR</b>	Door holder, recessed, dark bronze powder coat.
<b>EF-RSG-DH24120GPC1</b>	Door holder, ground mount, single-door, chrome powder coat.
<b>EF-RSG-DH24120GB1</b>	Door holder, ground mount, single-door, brass plated.
<b>EF-RSG-DH24120GDBR1</b>	Door holder, ground mount, single-door, dark bronze powder coat.
<b>EF-RSG-DH24120GPC2</b>	Door holder, ground mount, double-door, chrome powder coat.
<b>EF-RSG-DH24120GB2</b>	Door holder, ground mount, double-door, brass.
<b>EF-RSG-DH24120GDBR2</b>	Door holder, ground mount, double-door, dark bronze powder coat.

#### Extensions:

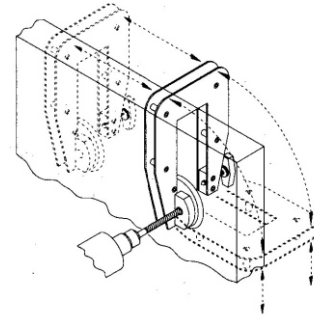
<b>EF-RSG-DHE-1PC</b>	1" (2.54 cm) Extensions rod, chrome.
<b>EF-RSG-DHE-1B</b>	1" (2.54 cm) Extension rod, brass.
<b>EF-RSG-DHE-1.5PC</b>	1.5" (3.81 cm) Extension rod, chrome.
<b>EF-RSG-DHE-1.5B</b>	1.5" (3.81 cm) Extension rod, brass.
<b>EF-RSG-DHE-2PC</b>	2" (5.08 cm) Extension rod, chrome.
<b>EF-RSG-DHE-2B</b>	2" (5.08 cm) Extension rod, brass.
<b>EF-RSG-DHE-3PC</b>	3" (7.62 cm) Extension rod, chrome.
<b>EF-RSG-DHE-3B</b>	3" (7.62 cm) Extension rod, brass.
<b>EF-RSG-DHE-4APC</b>	4" (10.16 cm) Adjustable extension rod, chrome.
<b>EF-RSG-DHE-4AB</b>	4" (10.16 cm) Adjustable extension rod, brass.

#### Accessories:

<b>EF-RSG-DHCPC</b>	Catch plate, chrome.
<b>EF-RSG-DHCPB</b>	Catch plate, brass.
<b>EF-RSG-DHSBPC</b>	Swivel base, chrome.
<b>EF-RSG-DHSBB</b>	Swivel base, brass.
<b>EF-RSG-DHBBPC</b>	Back box, chrome.
<b>EF-RSG-DHBBB</b>	Back box, brass.
<b>EF-RSG-DHW</b>	Extension wrench. (2 pieces)
<b>EF-RSG-DHDF</b>	Swivel base mounting drill fixture

### Installation Tools:

#### DHDF (drill fixture)



### Engineering Specification

As indicated on the plans, Doors shall contain Electro Mechanical Door Holders. The Door Holders shall be constructed of durable die-cast metal finished in high luster chrome or brass (as indicated). The electro mechanical door holders shall include dual voltage AC or DC inputs of 12 & 24Volts, 24 & 120volts, and 24 and 220volts. Units shall draw low current and shall have available options for extensions and surface mount back boxes. Door holders shall offer superior holding force and low residual magnetism. Door Holders shall be Evax model EF-RSG-DH Series and be finished as indicated on plans.

*Specifications are subject to change without notice. Specifications are provided for information only and no responsibility is assumed by Evax Systems, Inc for their use.*